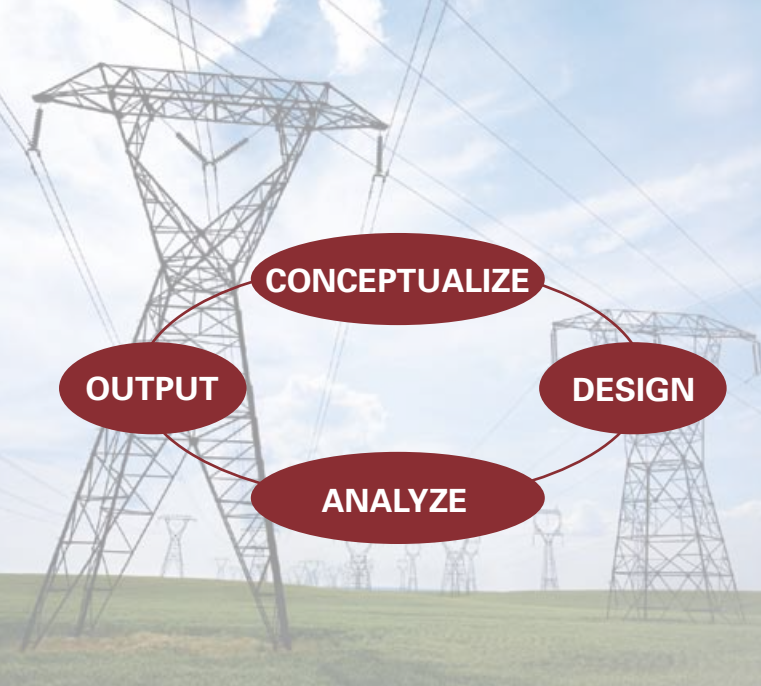


Power **System Software** · Turn Days into Minutes

 **EasyPower**® 9.0





# TRULY AUTOMATED POWER SYSTEM SOFTWARE

Eliminate the tedium of power system design and analysis with EasyPower® 9.0. Time-shaving features, cost-cutting efficiencies, and incredibly simple tools reduce days of work into mere minutes.

Instantly finish even the most complicated electrical design tasks, such as arc flash calculations, sizing equipment per the National Electrical Code, setting devices for maximum safety, and creating full document sets for easy sharing.

EasyPower also provides the engineering rationale behind every calculation with automatically generated reports that immediately verify compliance and list all design parameters, protection settings, PPE requirements, and more.

## Conceptualize Quickly with User-Friendly Templates

- Create one-lines in a few simple clicks
- Pre-designed templates simplify and speed up one-line creation
- Get fast, easy access to multiple one-lines and all sub-drawings and documents
- Effortlessly tap into the most comprehensive library of manufacturers' equipment

## Design Accurately with Automated Coordination and Design

- Automated design and equipment selection to NEC codes
- Series coordinated breakers are selected automatically
- Easily set up design templates to match your in-house standards and local code regulations
- Get a comprehensive bill of materials—including detailed costs—with no extra work

## Analyze Easily with Calculations Done for You

- Automatically validates ANSI and IEC standards on your design or existing facility
- Advanced IEEE 1584 arc flash hazard calculations are instinctively done for you
- Leading-edge technology provides the fastest, most accurate solutions
- Dynamically interact with the one-line in any analysis
- Use the world's first and only automated PDC program to set devices with one click

## Output Effortlessly with Integrated Reports and Documents

- Avoid hours of extra CAD work by creating multiple drawing document sets (one-lines, MCC, panel, and switchgear schedules, or combinations) in mere seconds
- With just a few clicks, output multiple drawings to any CAD program for a full electrical document set, or click the Print button for full WYSIWYG printing
- Schedules linked to Excel and CAD for automatic updating
- Concept, design, and analysis output integrates with Excel and Word for painless sharing and report production

# IN JUST A FEW MOUSE CLICKS

## Create Your Entire Electrical Document Set

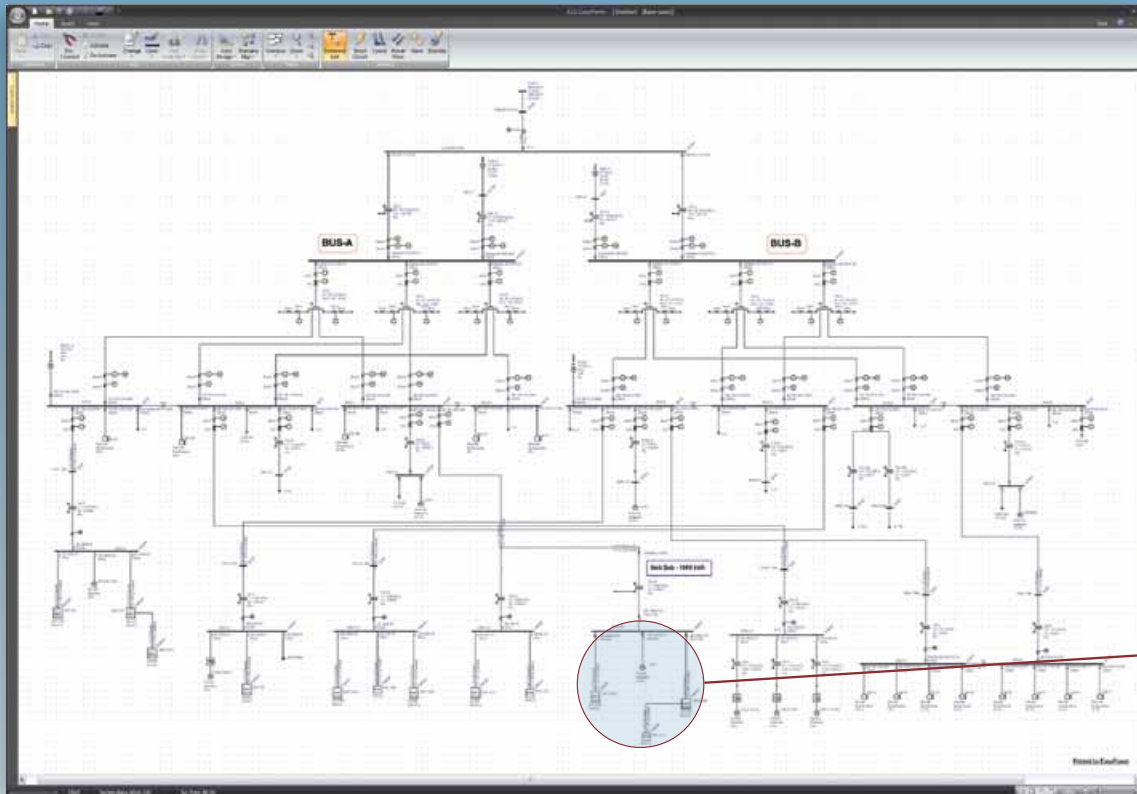
What used to take weeks, now only takes a few clicks

Create and access multiple drawings right from the one-line

Export to any CAD program

Print or plot directly from EasyPower

*Could It Be Any Easier?*



Equipment Name	Manufacturer	Model	Rating	Notes
GENC. TRANSFORMER	GE	...	...	...
GENC. TRANSFORMER	GE	...	...	...
GENC. TRANSFORMER	GE	...	...	...
GENC. TRANSFORMER	GE	...	...	...
GENC. TRANSFORMER	GE	...	...	...
GENC. TRANSFORMER	GE	...	...	...
GENC. TRANSFORMER	GE	...	...	...
GENC. TRANSFORMER	GE	...	...	...
GENC. TRANSFORMER	GE	...	...	...

Panel: PH1, 4	Panel Name: Unit Sub - 1000 kVA			
Equipment Name	Manufacturer	Model	Rating	Notes
GENC. TRANSFORMER	GE	...	...	...
GENC. TRANSFORMER	GE	...	...	...
GENC. TRANSFORMER	GE	...	...	...
GENC. TRANSFORMER	GE	...	...	...
GENC. TRANSFORMER	GE	...	...	...
GENC. TRANSFORMER	GE	...	...	...
GENC. TRANSFORMER	GE	...	...	...
GENC. TRANSFORMER	GE	...	...	...
GENC. TRANSFORMER	GE	...	...	...
GENC. TRANSFORMER	GE	...	...	...

Panel Summary:

- Total Equipment Count: 10
- Total Equipment Load: 1000 kVA
- Total Busbar Load: 1000 kVA

## Learn More Online

Explore all the features and see EasyPower in action.

View larger screenshots and get free tools in our Arc Flash Resource Center.

Download a free demo copy.

[www.easypower.com](http://www.easypower.com)

## 30-Day Unconditional Guarantee

It's really simple. If you're not satisfied with an ESA software product within 30 days of purchase, you can send it back for a full refund.

# UNRIVALED FEATURES TO BOOST PRODUCTIVITY

## SmartDesign™

SmartDesign radically simplifies the design process: just right-click on an area to design and get automatic calculations of all equipment sizing requirements per NEC. Comprehensive, integrated reports provide valuable insight and alerts to problem areas. You can also ensure consistent standards with reusable design sheets set to specific parameters.

## SmartPDC™

In one click, set protective devices without having extensive engineering knowledge or training. Simply right-click on an area to coordinate and let SmartPDC do the rest. Intelligent and automatic reporting provides a detailed listing of each protective device, its setting options, and the reasons for adjusting the device to a particular setting.

# UNIQUE BENEFITS

Saving hours of time, EasyPower 9.0 is the most automated power system software available. And with the shortest learning curve, even non-engineers can get the fastest, most accurate results.

## A Whole New Level of Automation

- Ensure safe, reliable, and consistent system design and operation
- Document all code and design requirements
- Literally free up weeks from your current workload
- Avoid costly mistakes and time-consuming errors
- Reduce safety concerns and liability exposure
- Eliminate the frustrating tedium of complying with countless regulations
- Boost profitability by saving valuable time and money

# ARCFLASH™ — EASYPower's MOST POPULAR FEATURE

## Trust the Industry Leader for Ensuring Safety and Compliance

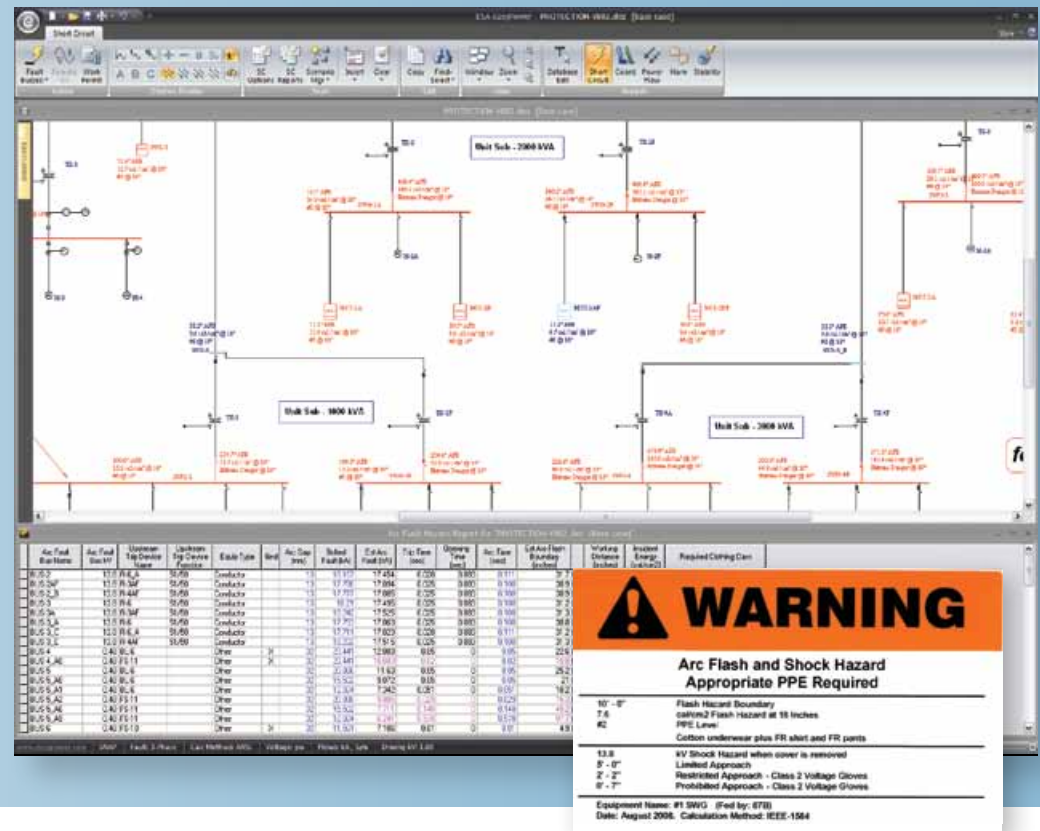
Thousands of companies have come to rely on EasyPower for developing sound and compliant arc flash programs. Given recent OSHA regulations and workplace safety concerns, it is now a top priority for many more in the industry.

Tap into EasyPower's easy-to-use ArcFlash™ tools to complete and manage your arc flash initiative.

## Reduce Risk, Save Time, and Ensure Compliance

- Fastest, most accurate arc flash hazard calculations in the industry
- Full IEEE-1584 and NFPA 70E compliance, easily documented
- IEEE-1584 time domain calculations using decaying ANSI currents and full dynamic flux models
- NFPA 70E work permits quickly created with built-in templates
- Click any bus or device to see PPE, arc hazard, and arc boundary requirements
- Intelligent zone selective interlocking (ZSI) for LV solid-state breakers
- Detailed comparisons of all facility operating conditions, verified easily
- Specialized protective device settings for maintenance, increasing safety and compliance

**Explore More Industry-Leading Features Online**



Download free resources for your Arc Flash Safety Program, visit

[EasyPower.com/ArcFlash](http://EasyPower.com/ArcFlash)

## MORE PRODUCT OFFERINGS

The EasyPower® family delivers a full lineup of powerful Windows®-based software for intelligently designing, analyzing, and monitoring electrical power systems.

### Customize a Solution Choose from EasyPower's Full Lineup

- **SmartDesign™** – automatically size feeders, breakers, fuses, switchgear, busway, MCCs, panels—and more—all per NEC requirements.
- **SmartPDC™** – completely simplify protective device coordination with one-touch automation.
- **ArcFlash™** – confidently meet OSHA and NFPA 70E regulations and safety program requirements.
- **ANSI ShortCircuit™** – instantly verify protective-device and equipment ratings for ANSI, NEC and NFPA 70E compliance.
- **IEC ShortCircuit™** – instantly verify protective-device and equipment ratings for IEC 60909 standards and more.
- **PowerFlow™** – intelligently optimize voltage, current, and load flows to minimize system downtime.
- **PowerProtector™** – accurately ensure safety and reliability with comprehensive protective device coordination.
- **Spectrum™** – effortlessly identify and mitigate harmonic and power-quality problems.
- **Dynamic Stability™** – accurately simulate dynamic interaction between machines, networks, and protective device actions.
- **Transient Motor Starting™** – precisely calculate starting times, speed, torque, system voltage drops, relay interactions, and more.

### Get Started with EasySolv™

Ideal for electrical contractors and electricians.

- Develop one-lines quickly and easily
- Perform arc flash calculations and analysis
- Maintain system and safety documentation
- Perform most EasyPower functions

### Stay on Track with SafetyTracker™

Ideal for facility and maintenance personnel implementing safety programs.

- Reference EasyPower and EasySolv one-lines
- Print accurate arc flash labels
- Create energized work permits
- Access all safety documents in one place

Visit [www.EasyPower.com](http://www.EasyPower.com)  
to learn more.



ESA International LLC • PO Box 2110 • Clackamas, OR 97015

Tel: 503-655-5059 • Fax: 503-655-5542 • [esa@EasyPower.com](mailto:esa@EasyPower.com) • [www.EasyPower.com](http://www.EasyPower.com)

© 2012 ESA International LLC. All rights reserved. Unauthorized duplication is a violation of international copyright laws. Windows is a registered trademark of Microsoft Corporation in the United States and other countries.